

## Shirley Wild: Hats off to Reciprocity's luncheon

By Shirley Wild

Posted: 02/04/2012 09:59:03 PM PST

Updated: 02/05/2012 02:30:21 AM PST

Hundreds of hats arranged on candelabras, serving as table centerpieces, greeted the 280 women attending the Long Beach District Philanthropic Educational Organization (PEO) Reciprocity Bureau's Founder's Day celebratory luncheon Jan. 28.

The theme of the event, held at the Petroleum Club, was "Hats Off to PEO." It featured every imaginable style, color and shape in the many chapeaux on display, including those of men, women, children, firefighters, police officers and ballplayers. Hostesses also wore hats, adding to the fun of the day.

Following entertainment presented by the Golden Sands Chorus, Reciprocity President Lucretia Knutson introduced special guests including Reciprocity past presidents and 50-plus year members.

Founders Day Committee Chairwoman Norma Marter said: "The inspiration to us each year is brought by the speakers who have received financial aid from PEO. These three young women have close ties to our chapters."

She said one of the women is the daughter of a Reciprocity board member, and the other two are granddaughters of chapter

members. The scholarship speakers included: Heather Campion Payne, Holly Hodges and Dr. Carrie Brubaker.

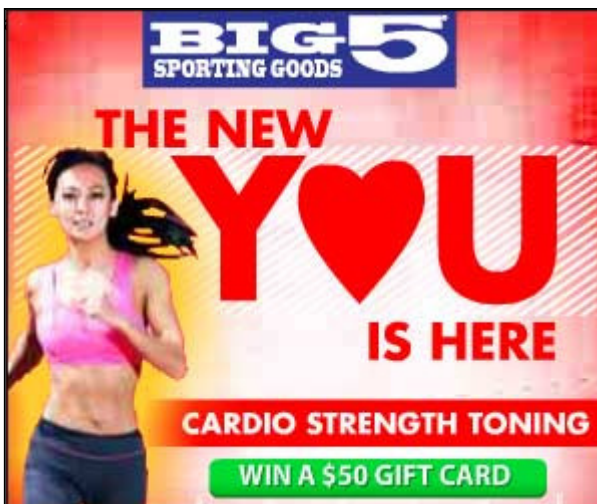
Payne is a school psychologist in the Saddleback Valley School Unified School District. She is the recipient of the Janet H. Griswold Memorial Scholarship and Dorothy Dunning's granddaughter.

After graduation and an internship with Walt Disney Imagineering, Hodges was hired as a mechanical engineer to work on

and oversee construction on a brand-new roller coaster in Shanghai, China. She received the Educational Loan Fund award (and is Evelyn Belisle's granddaughter).

Brubaker graduated Phi Beta Kappa and is performing postdoctoral research at the Ecole Polytechnique Federale de Lausanne in Lausanne, Switzerland. Carrie is a PEO Scholar Award recipient and also the Louise Remy Endowed Scholar for 2011-2012. (She is Janet Brubaker's daughter.)

Seven young women founded PEO 143 years



ago. It has grown to nearly 250 million women in the United States and Canada while providing over \$210 million scholarships, grants, awards and loans that have helped many women reach their educational goals.

Seen at the scene: Janet Brubaker, Mary Bush, Gini Kesler, Nancy Yoho, Norma Kober, Betty Lou Rollo, Sally Szabo, Dorothy Dunning, Cheryl Davis, Violet Quist, Merle Foster, Maria Pereira, Mona Thomason with Merle and Betty McCoy.

## Las Damas

Nearly three dozen members of Las Damas de la Plaza gathered for the second annual Tamale Pie Extravaganza at the Fountains Clubhouse on Jan. 18.

After a brief business meeting, margaritas, tamale pie and salad were served.

Las Damas de la Plaza was founded in 1984 to promote and advance the welfare of Community Hospital of Long Beach. It is a small group of women who raise money for needed equipment for the hospital. For more information, call 562-596-0876.

Seen at the scene: President Phyllis Bowles, new members Pat Ramsburg, Arelia Mvros, Ann Hayden, Marald Nosworthy, Pat Mohler and Christy Roeber.

## St. Mary Guild

The beautiful seaside mansion that houses the Long Beach Museum of Art - built in 1910 by the Anderson Family - was the scene for the St. Mary Medical Center Guild

Provisional Luncheon and election of officers on Jan 19.

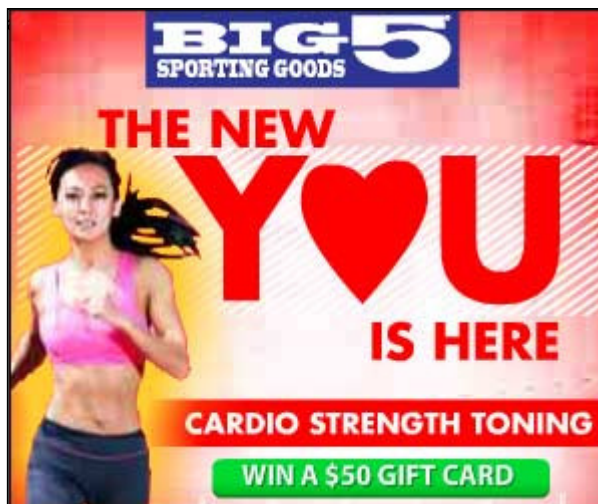
President Ginnie Wilcox welcomed new provisionals Eleanor Siegrist and Jo Ann Clark with a rose bouquet. St. Mary Medical Center Foundation President Drew Gagner gave a current status report on the medical center.

Lunch was served in the Nussbaum Room, overlooking the sunny waterfront and swaying palm trees, on tables decorated with white tablecloths and pink long-stemmed roses with garlands of green ferns.

The setting was perfect for the election of officers. Jeanne Coughlin presented the slate of officers: President Martha McNaughton, Carol Marshall, Rose Lozano, Beverly Culbertson, Leone Landis and Shirley Nyquist.

SMMC Guild is a fundraising entity of the medical center.

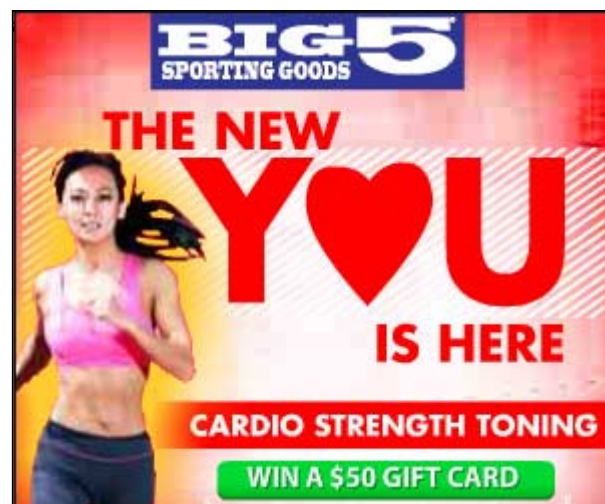
Seen at the scene: Lynette Rausch, leading the prayer; Sheila Hanley, Ginny Oleen,



presstelegram.com

Marian Cormie, Barbara Schor; and guests from the foundation JoAnn Accord, Laura Aguirre and Debra Woods; more invited guests were Karen Henkenius, Bob McNaughton and Lloyd Wilcox.

News of social events with charitable purposes may be sent to Shirley Wild at [spwild@verizon.net](mailto:spwild@verizon.net) or by fax to 562-594-9668. Please include a contact phone number. Send high-resolution jpeg photos, by attachment, to [spwild@verizon.net](mailto:spwild@verizon.net) and include group name and identification of individuals from left. Call Shirley at 562-594-9468 for more information. Please check the website for coverage of additional events: [www.presstelegram.com/social](http://www.presstelegram.com/social).



Print Powered By  FormatDynamics™